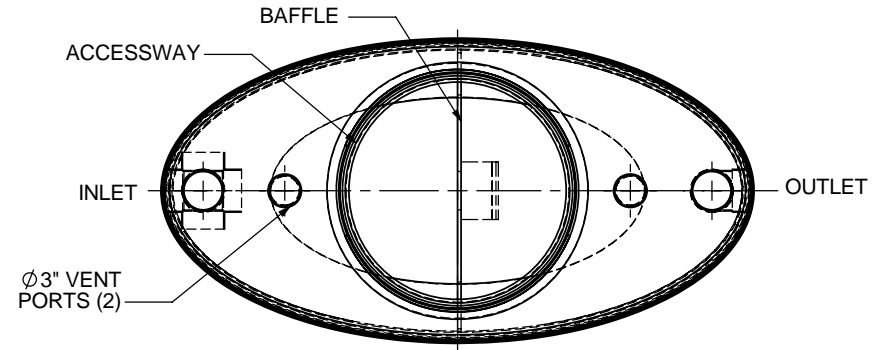
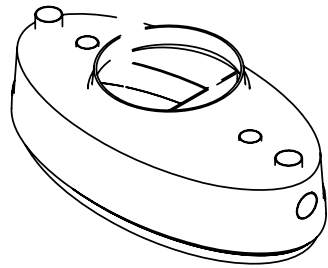


NOTES:

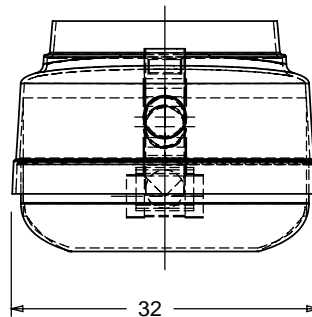
1. FOR GRAVITY APPLICATIONS ONLY.
2. ALL PROCEPTOR® UNITS ARE MANUFACTURED WITH FIBERGLASS REINFORCED PLASTICS. PHYSICAL CHARACTERISTICS AND THICKNESS: POLYESTER RESIN AND E GLASS MINIMUM THICKNESS 1/4" WALL AND 3/8" TOP AND BOTTOM BOWLS.
3. ALL PROCEPTOR® UNITS ARE TO BE INSTALLED IN ACCORDANCE WITH THE MANUFACTURERS INSTALLATION INSTRUCTION.
4. STANDARD PIPE STUBS ARE SOCKET SDR 35 PVC SEWER MATERIAL (SCHEDULE 40 ADAPTORS ADDED FOR ALL PROJECTS IN USA).
5. GMC/OMC/SMC 50 - 300 UNITS COME STANDARD WITH 4" INLET AND OUTLET (OTHER CUSTOM SIZES AVAILABLE AT EXTRA CHARGE).
6. EXTENSION COLLAR TO BE ORDERED TO MEET FINISHED GRADE, CUT ON SITE FOR FINAL ADJUSTMENT AND CAULKED WITH SIKAFLEX BY CONTRACTOR FOR WATERTIGHT SEAL.
7. COVERS AVAILABLE FOR H2O TRAFFIC LOADING, PEDESTRIAN LOADING OR ABOVE GROUND INSTALLATION.
8. CONSULT GREEN TURTLE™ FOR OTHER SIZES.
9. 30 YEAR WARRANTY AGAINST LEAKS, AND STRUCTURAL FAILURE.
10. U.S. PATENT #5,746,912; CDN PATENT #2,195,822



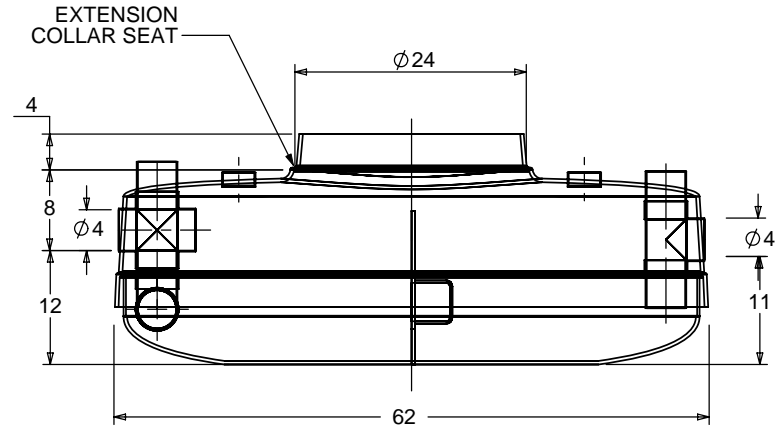
TOP VIEW



ISOMETRIC VIEW



SIDE VIEW



FRONT VIEW

TOTAL WET VOLUME: 50 GAL
 MAX. GREASE CAPACITY: 12 GAL
 MAX SOLIDS CAPACITY: 11 GAL

CONSULT LOCAL AUTHORITIES FOR
 MINIMUM SIZE OF SEPARATORS

TITLE: PROCEPTOR® F.O.G. SEPARATOR		REV	DATE	DRAWN
GMC 50 GALLON INTERCEPTOR		1		
4" INLET & OUTLET		2		
24" ACCESSWAY		3	JUNE 1, 2005	L. SIMKINS
ALL DIMENSIONS IN INCHES		4	OCTOBER 26, 2006	L. SIMKINS
PROJECT:	WO:	5	DEC. 13, 2006	L. SIMKINS
		6	NOV. 24, 2008	L. SIMKINS
		7	NOV. 3, 2009	L. SIMKINS
✓ OPTIONS:		8		
GREASE SENSOR ALARM		9		
SUCTION PIPE FOR INDOOR INSTALLATION		10		
ABOVE GROUND INSTALLATION		DRAWN BY: F CHANDLER		
		DRAWN DATE 9/2/04		

Proceptor®
 by greenturtle®
 US 877 428 8187 CAN 877 966 9444
 www.greenturtletech.com

SIZE	DWG. NO.	REV
A	GMC 50	7

SCALE:1:20 | DO NOT SCALE DRAWING | SHEET 1 OF 1