

OMC 500, 750, 1000, 1300 UPC FOR UPC/IAPMO INSTALLATION DRAWING

NOTES:

- REFER TO INSTALLATION PROCEDURE AND INSTALLATION CHECKLIST.
- PROCEPTOR SEPARATORS MUST BE INSTALLED IN ACCORDANCE WITH ALL RELEVANT FEDERAL, PROVINCIAL/STATE, AND LOCAL CODES INCLUDING LOCAL PLUMBING CODE.
- US PATENT # 5,746,912; CDN PATENT # 2,195,822

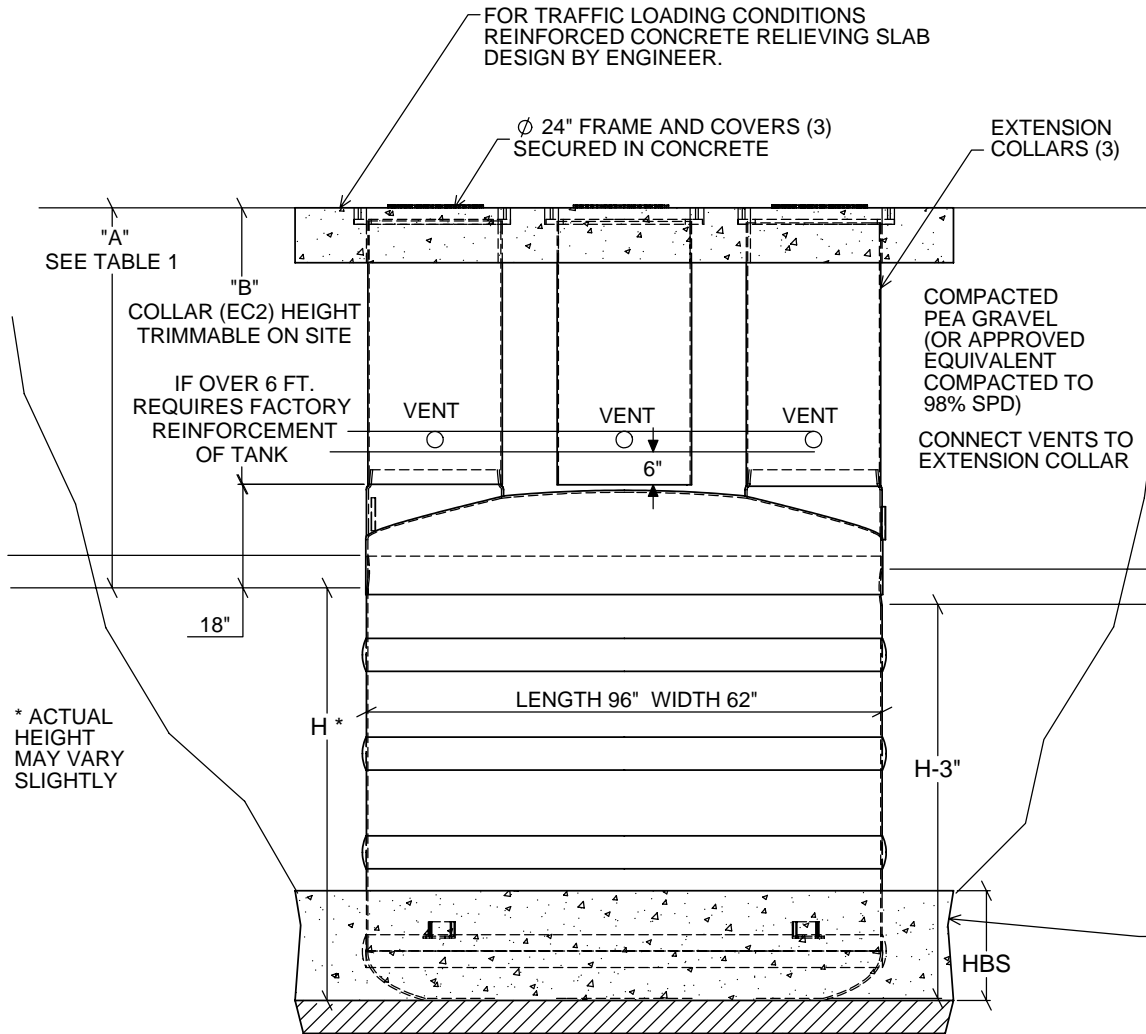


TABLE 2

PROCEPTOR SEPARATOR MODEL	INLET INVERT TO TANK BOTTOM (H*)	HEIGHT OF BUOYANCY SLAB (HBS)	DRY WEIGHT OF TANK
OMC 500 UPC	33"	18"	565 lbs
OMC 750 UPC	46"	19"	600 lbs
OMC 1000 UPC	60"	26"	700 lbs
OMC 1300 UPC	75"	35"	800 lbs

TABLE 1

BURIAL DEPTH	A	B
Max.	7' 6"	6 ft.
Min. with Traffic	36"	18"
Min. no Traffic	24"	** 10"

** MAY VARY DEPENDING ON VENT PIPING AND FLOOR SLAB

MIN. 6" COMPACTED PEA GRAVEL (OR APPROVED BACKFILL COMPACTED TO 98% SPD)

ANTI-BOUYANCY SLAB FOR HIGH WATER TABLE CONDITIONS ONLY
3000 psi CONCRETE READY MIX POUR 12" HORIZONTALLY ALL AROUND BASE OF UNIT TO HEIGHT OF BUOYANCY SLAB (HBS - SEE TABLE 2)

TITLE: PROCEPTOR OIL SEPARATOR
INSTALLATION FOR OMC 500, 750,
1000, 1300 UPC

PROJECT: WO:

✓ OPTIONS:

REV	DATE	DRAWN
1		
2	SEPTEMBER 20, 2005	L. SIMKINS
3	OCTOBER 3, 2006	L. SIMKINS
4	JAN. 30, 2007	L. SIMKINS
5		
6		
7		
8		
9		
10		

DRAWN BY: F CHANDLER

DRAWN DATE 6/18/04

ProceptorTM
by greenturtleTM

US 877 428 8187 CAN 877 966 9444
www.greenturtletech.com

SIZE	DWG. NO.	REV.
A	INSTALL OMC 500-1300 UPC	4

SCALE:1:35 DO NOT SCALE DRAWING SHEET 1 OF 1