

GMC/OMC/SMC 500, 750, 1000, 1300, 1500(1) INSTALLATION DRAWING

NOTES:

- REFER TO INSTALLATION PROCEDURE AND INSTALLATION CHECKLIST.
- PROCEPTOR SEPARATORS MUST BE INSTALLED IN ACCORDANCE WITH ALL RELEVANT FEDERAL, PROVINCIAL/STATE, AND LOCAL CODES INCLUDING LOCAL PLUMBING CODE.
- US PATENT # 5,746,912; CDN PATENT # 2,195,822

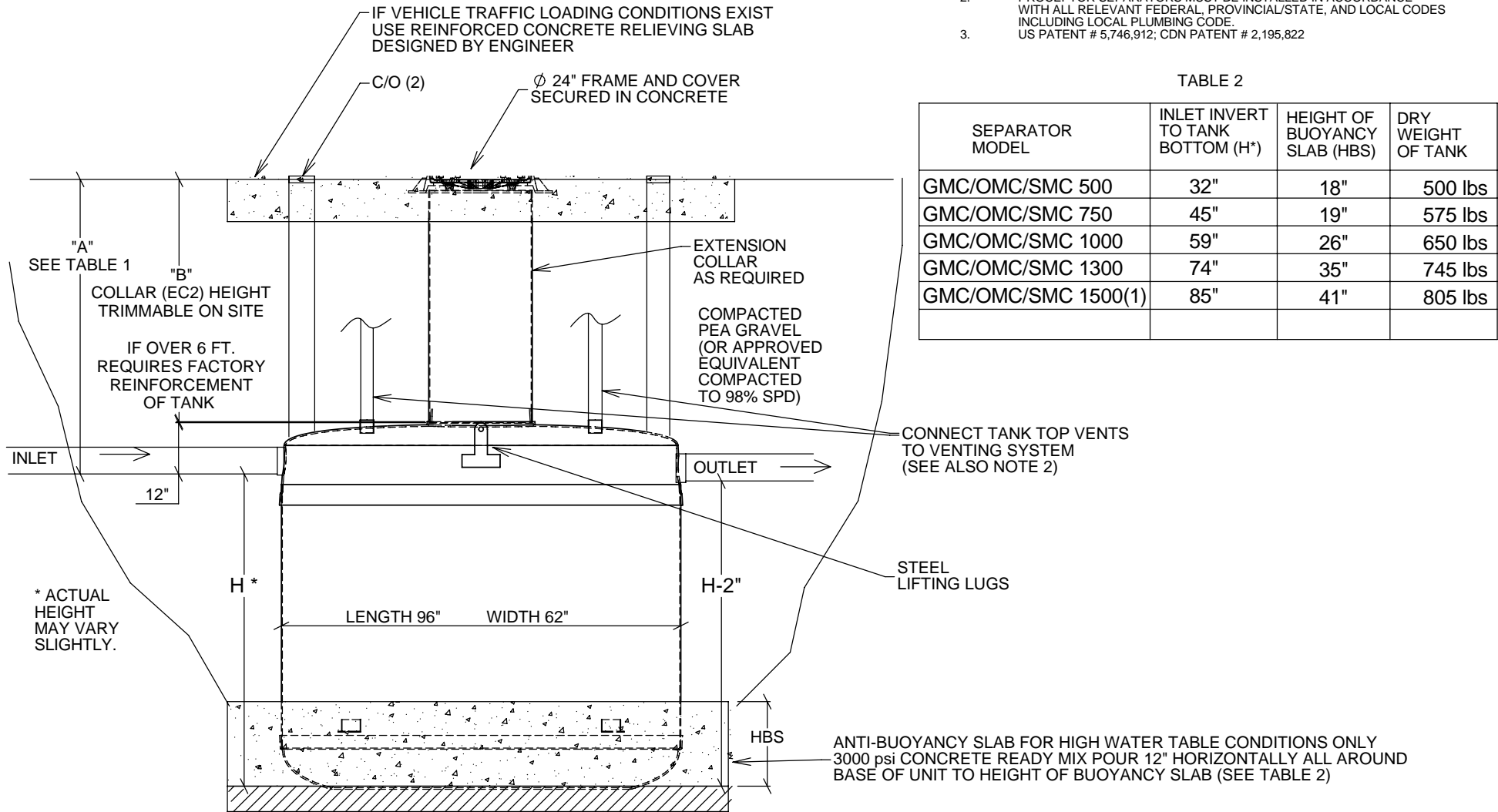


TABLE 2

SEPARATOR MODEL	INLET INVERT TO TANK BOTTOM (H*)	HEIGHT OF BUOYANCY SLAB (HBS)	DRY WEIGHT OF TANK
GMC/OMC/SMC 500	32"	18"	500 lbs
GMC/OMC/SMC 750	45"	19"	575 lbs
GMC/OMC/SMC 1000	59"	26"	650 lbs
GMC/OMC/SMC 1300	74"	35"	745 lbs
GMC/OMC/SMC 1500(1)	85"	41"	805 lbs

BURIAL DEPTH	A	B
Max.	7 ft.	6 ft.
Min. with Traffic	36"	24"
Min. no Traffic	24"	** 12"

MIN. 6" COMPACTED PEA GRAVEL (OR APPROVED BACKFILL COMPACTED TO 98% SPD)

TITLE: PROCEPTOR OIL AND GREASE SEPARATOR
INSTALLATION DRAWING FOR
GMC/OMC/SMC MODELS 500-1500(1)
ALL DIMENSIONS IN INCHES

PROJECT: WO:

REV	DATE	DRAWN
1	SEPTEMBER 10, 2007	L. SIMKINS
2	APRIL 22, 2008	L. SIMKINS
3		
4		
5		
6		
7		
8		
9		
10		

DRAWN BY: L. SIMKINS

DRAWN DATE: FEBRUARY 16, 2007

™

Proceptor

™

by greenturtle

US 877 428 8187 CAN 877 966 9444
www.greenturtletech.com

SIZE	DWG. NO.	REV.
A	INSTALL GMC/OMC 500-1500(1)	2

SCALE: 1:35 DO NOT SCALE DRAWING SHEET 1 OF 1

** MAY VARY DEPENDING ON VENT PIPING AND FLOOR SLAB